



Waterways



Complete video management solution for waterways

Road networks are increasingly congested and traffic over bridges and water locks will continue to intensify. Good flow and safety are of great importance, also because of the increasing laws and legislations. Therefore, objects are continuously modernised including the electronic installations.

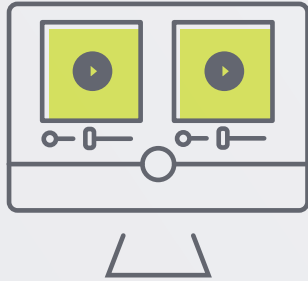
Within TKH Security we have been active in the waterways for years and therefore we know better than anyone how we, together with installers, can support end users with challenges, such as:

- Optimal flow of vehicles and ships
- Monitoring critical environments to respond quickly to changing traffic situations
- Surveillance of critical environments
- Providing the operator with the correct information at the right time.



Video Surveillance

By adding a video surveillance to your security system it is possible for you to watch what is happening real-time at a specific location and respond immediately. For operators, individual layouts can be created, completely personalised with panels that contain video playback, controls for third party systems, HTML browsers, floor plans and many other panels. By integrating



IP-cameras, codecs and video analysis techniques with the latest streaming methods, we offer you an excellent image quality. The system is based on an open architecture, which makes it easy to integrate and install (API and ONVIF support). Our powerful macro engine enables you to define how the system should react to certain events. Our video surveillance solution is scalable from a few to a few thousand cameras and other connected devices.

MOST IMPORTANT FEATURES

- > Motion detection recording
- > Video recording
- > Object detection
- > Failover security
- > Intelligent video content analysis (VCA)
- > One clear, easy to customise, dashboard with live images
- > Up to 70% reduced network loads with dual streaming and multicasting
- > Access also possible with mobile phone or web browser
- > Compatible with any security management system.



Fixed dome camera (article number: FD920)



Box camera (article number: BC920)



PTZ dome camera (article number: PD920)



Network Cameras

Many objects such as bridges and locks are still using analogue solutions. Existing cabling is often a major cost to replace when they want to switch to an IP solution. Also changing the existing infrastructure is not very durable if it can be reused. TKH Security has special hybrid cameras with both an analogue BNC connector and a SFP interface, allowing the camera to be connected with various SFP modules. This allows the opportunity to keep the existing cabling infrastructure, which significantly reduces costs.

These hybrid cameras enable you and your customers to use old-fashioned coax/ analogue networks and still migrate to IP cameras. Because of the various possibilities of connecting the camera on a BNC output or through a SFP interface, you can choose which interface is desirable for that specific moment, for example glass fibre, coax or ethernet. The end user can start using IP networks and make the step towards modern IP cameras by simply replacing the field components and central backbone, without changing the existing infrastructure.

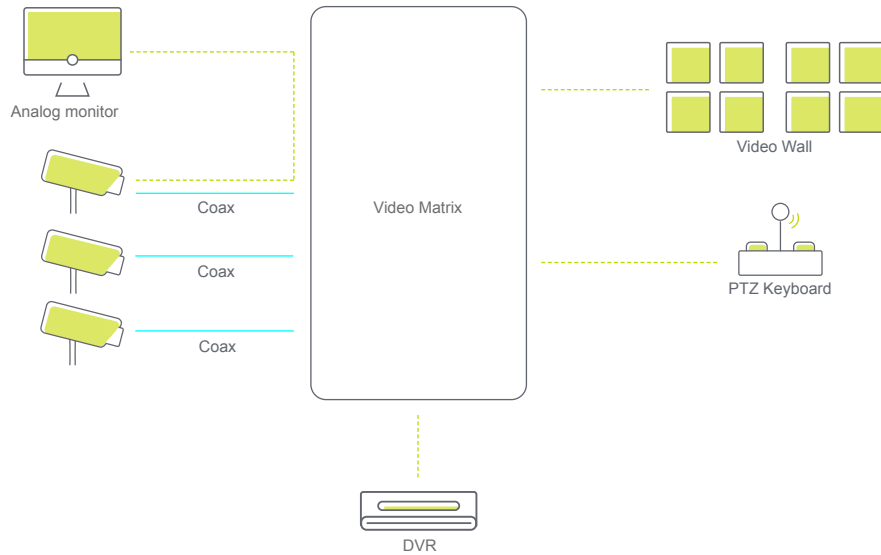
In combination with ECOplug (IP over Coax SFP Module) the IP cameras can be connected to the existing coax network. This specific camera range, the Siqura 920 series, is available as a fixed dome camera (article number: FD920), box camera (article number: BC920) and as a PTZ dome camera (article number: PD920). Especially the BC920 box camera is, with its 3MP very light sensitive sensor and P-iris, very suitable to take the correct image, even in difficult light conditions. [Read more](#) about the BC920 camera.

Another advantage of the 920 line is the increased cybersecurity. Because of this strong passwords and unused ports are blocked, IEEE802.1x and HTTPS encryption with TLS 1.2. Furthermore, these cameras can be directly connected to glass fibre because of the SFP interface, which separates the CCTV network physically from other networks. using fibre, 920 cameras can also transmit images over longer distances. This is ideal to minimise the use of media converters or electrical components in the field.

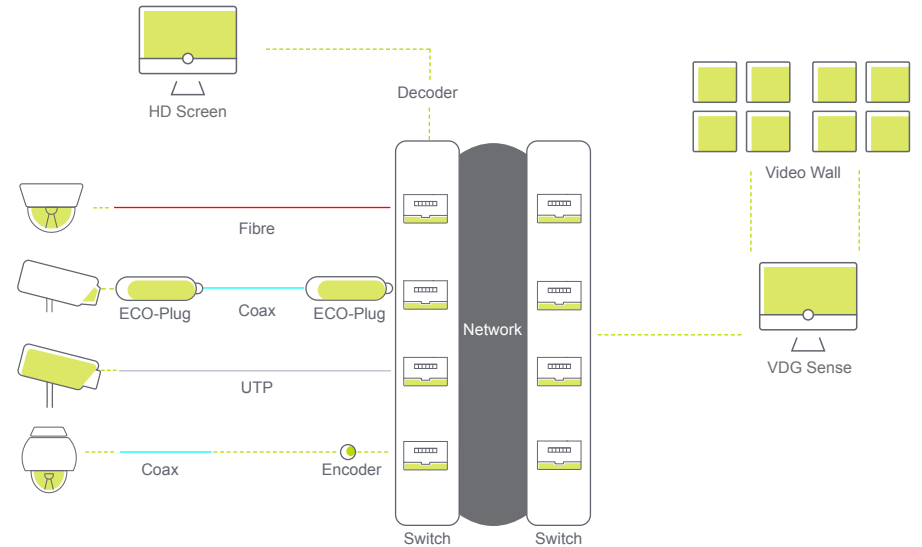


Examples of Networks

Analogue solution



Hybrid solution



Thermal Cameras

Thermal cameras detect, regardless the weather condition, rain, fog or low sun, whether there are people located on an object. A signal can be automatically sent to the control room and if necessary, action can be undertaken. Because of the XCU Compact camera, operators can detect if there are people or vehicles located on a critical locations on the object.

The XCU Compact camera is equipped with a special stainless-steel housing and is available with various objectives: 7.5mm, 9mm, 13mm, 19mm, 25mm of 35mm.

Larger viewing angles are also available.

[Read more](#) about the full thermal XCU cameras product range.

Stainless Steel Cameras

The XCU Compact range is not only available as thermal stainless-steel cameras but is also available as optical stainless-steel cameras. For example, the XCU Compact camera.

[Read more](#) about the specifications of this product.

This full HD camera is available as 2.8 mm - 12 mm (4x) and as mid-range 5 mm - 50 mm (10x) camera. This can be connected to glass fibre or ethernet.

Encoders

Besides a complete video management system and various cameras, we also offer you various encoders that can transfer analogue signals to an IP signal. With the four-channel encoder S-64 Ev2 or the one-channel encoder C-60 E-MC, you can make use of IP technology. [Read more](#)





References

[Waterworks Zeeland, the Netherlands](#)

[Bosphorus Bridge, Istanbul Turkey](#)

[World's biggest causeway in Kuwait](#)

About us

TKH Security offers smart and user-friendly security, video, parking facility and asset & site management solutions for the infrastructure market segment. TKH Security and Siqura have a strong position in the Benelux and multiple offices all over the world. Both are members of [TKH Group N.V.](#)





tkhsecurity.com